

1351

RIVER RIDGE II

SUNCADIA - PHASE 2 DIVISION 5

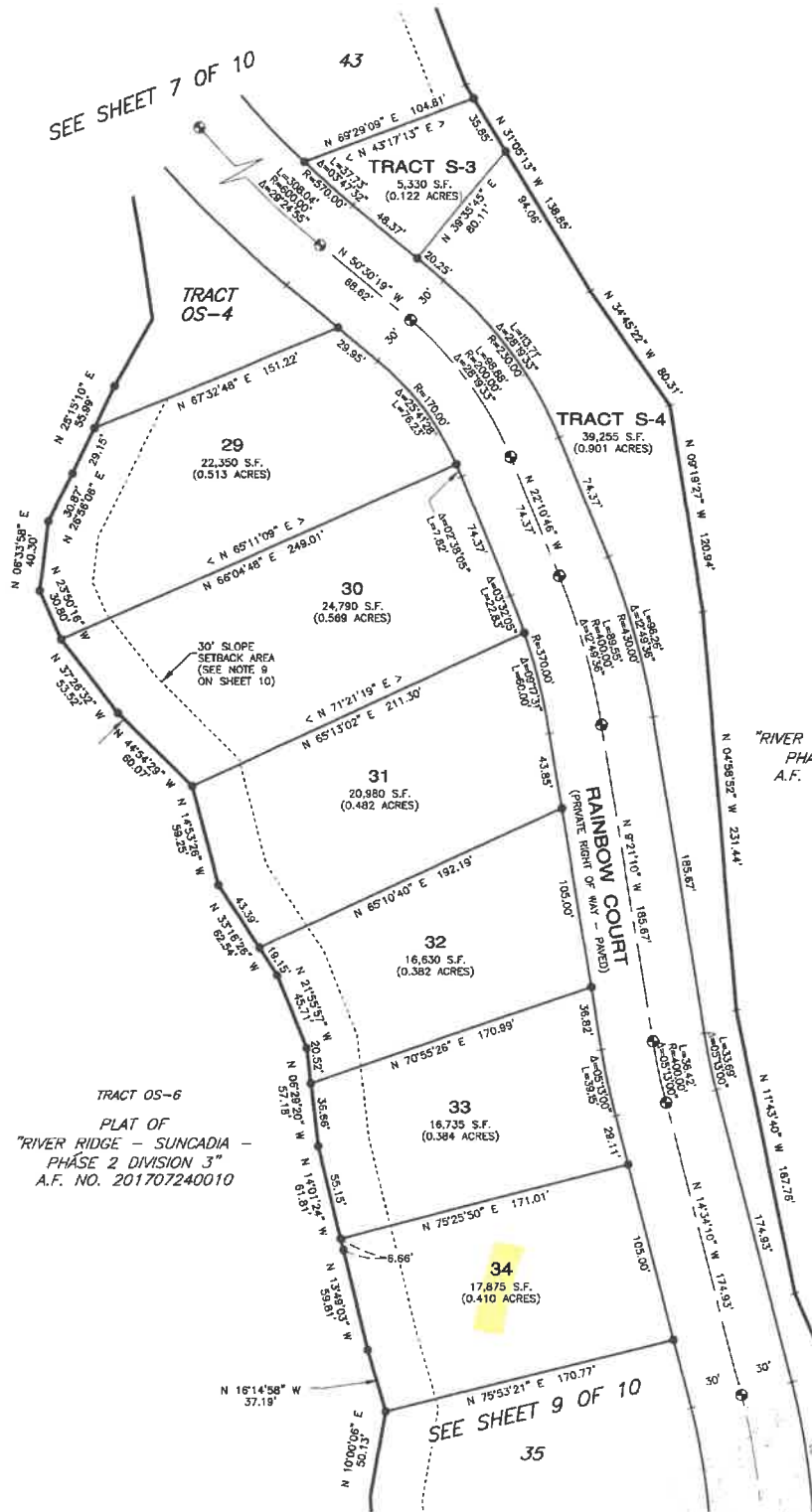
A PORTION OF SECTIONS 18 AND 19, T. 20 N., R. 15 E., W.M.
KITITAS COUNTY, WASHINGTON

ASSESSOR MAP NUMBERS 20-15-18053-0054, 20-15-18053-0072 AND 20-15-18053-0073

08/28/2019 02:54:48 PM V: 13 P: 51 201908260066
8107.68
ESM
Kititas County Auditor

LP-19-00001
LPF-19-00006

SEE SHEET 7 OF 10



SCALE: 1" = 50'

SEE LEGEND ON SHEET 9 OF 10

RECEIVED
NOV 23 2020
Kititas Co. CDS



RECORDING CERTIFICATE
FILED FOR RECORD AT THE REQUEST OF KITITAS COUNTY BOARD OF COMMISSIONERS,
THIS 26th DAY OF AUGUST, A.D., 2019, AT 54 MINUTES PAST
2 O'CLOCK P.M., AND RECORDED IN VOLUME 13 OF PLATS, ON
PAGES 44-45, RECORDS OF KITITAS COUNTY, WASHINGTON.

BY: *[Signature]* *[Signature]*
DEP. COUNTY AUDITOR KITITAS COUNTY AUDITOR

AUDITOR'S REFERENCE: 201908260066

ESM CONSULTING ENGINEERS LLC
33400 8th Ave. S, #205
Federal Way, WA 98003

www.esmcivil.com

Civil Engineering | Land Surveying | Land Planning
Public Works | Project Management | Landscape Architecture

FEDERAL WAY (253) 838-8113
EVERETT (425) 297-9900

DATE: 2019-08-08 JOB NO. 998-773-018-0002
DRAWN BY: C.A.F./R.F.G. SHEET 8 OF 10